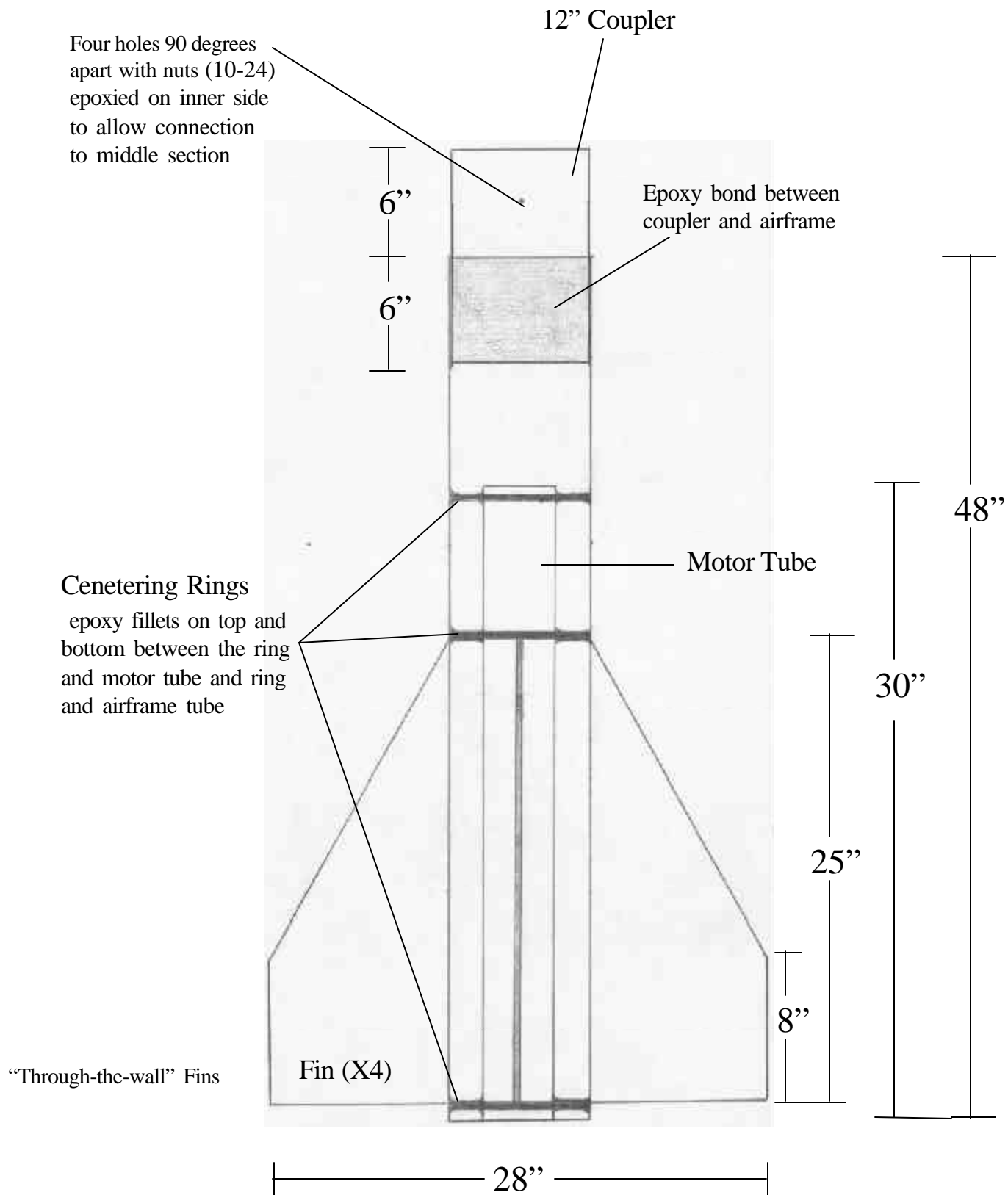
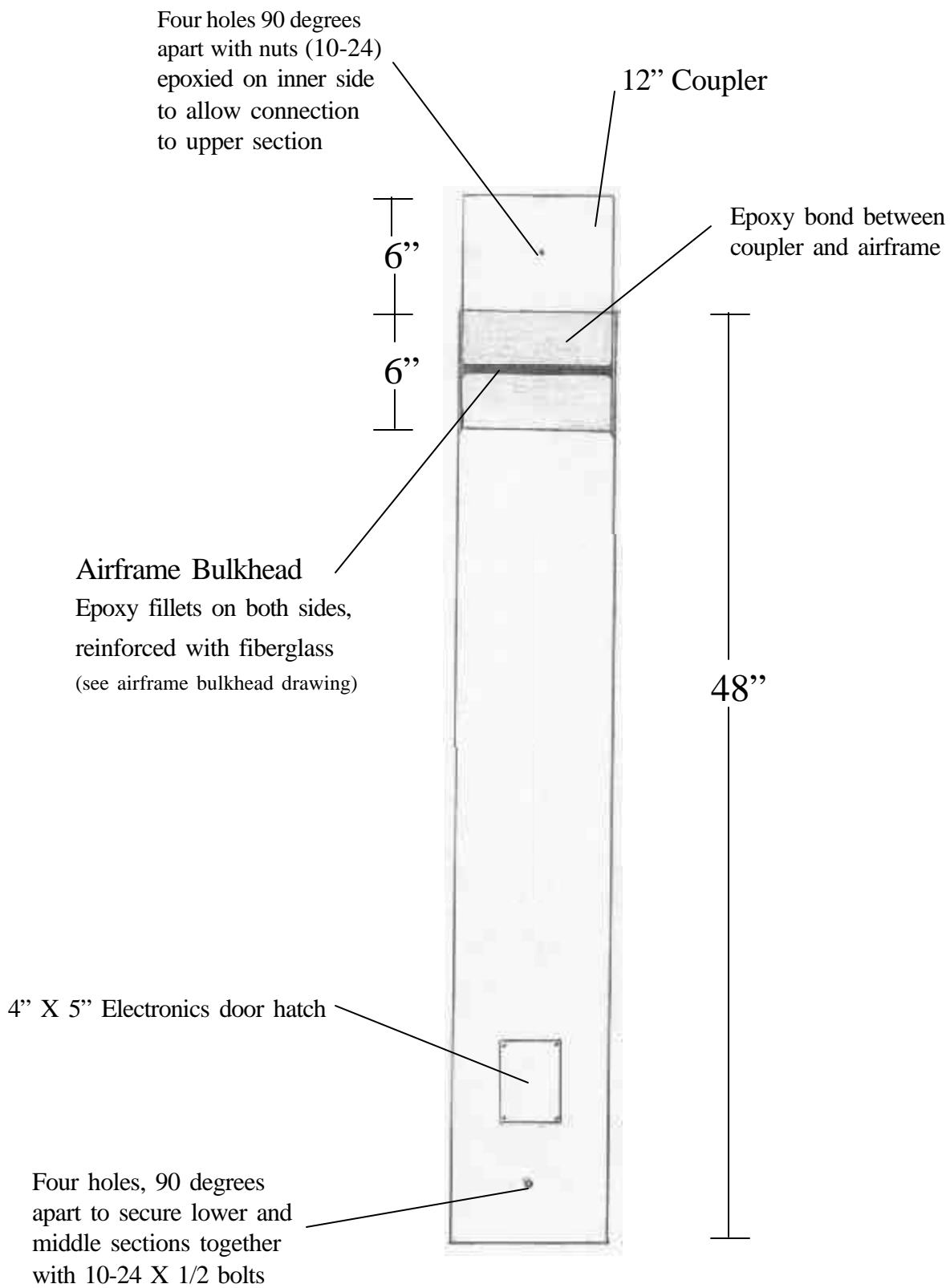


Overview



**Lower Airframe Section
(7.75" OD)**



**Middle Airframe Section
(7.75" OD)**

R18C parachute compartment



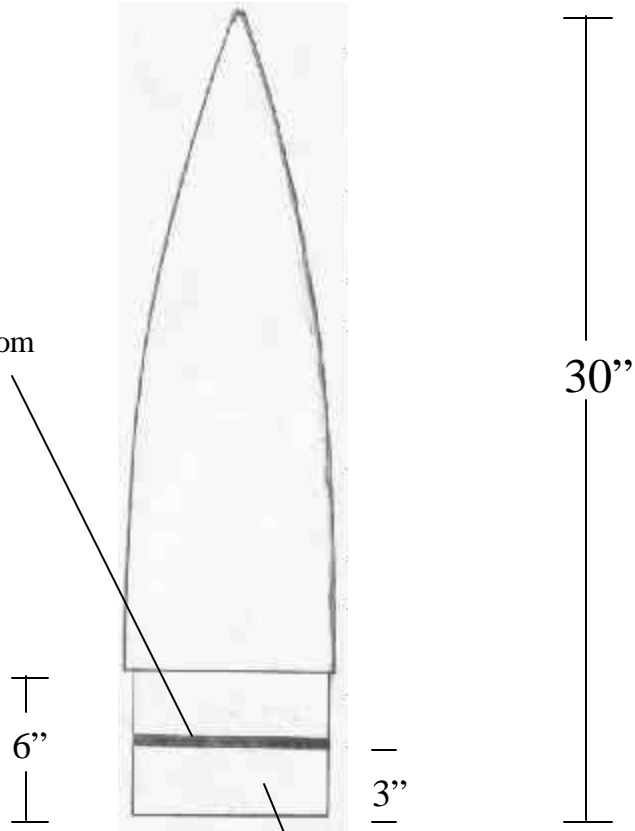
48"

Four holes, 90 degrees
apart to secure lower and
middle sections together
with 10-24 X 1/2 bolts

**Upper Airframe Section
(7.75" OD)**

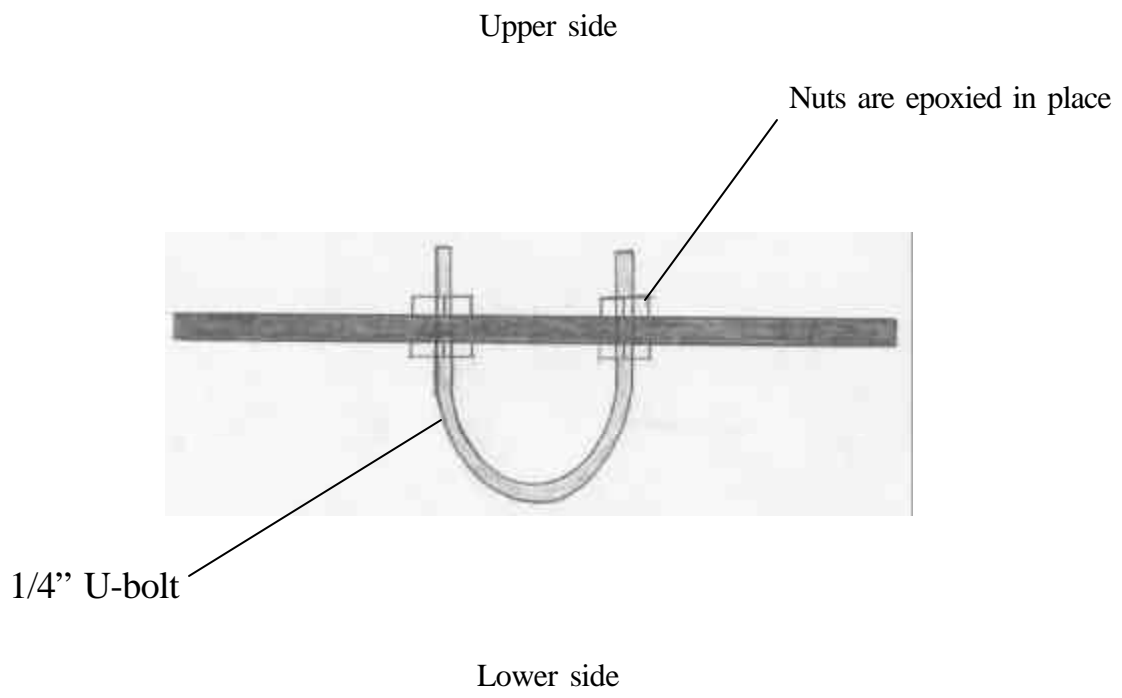
Nosecone Bulkhead

Epoxy fillets top and bottom, bottom side reinforced with fiberglass (see nosecone bulkhead drawing)

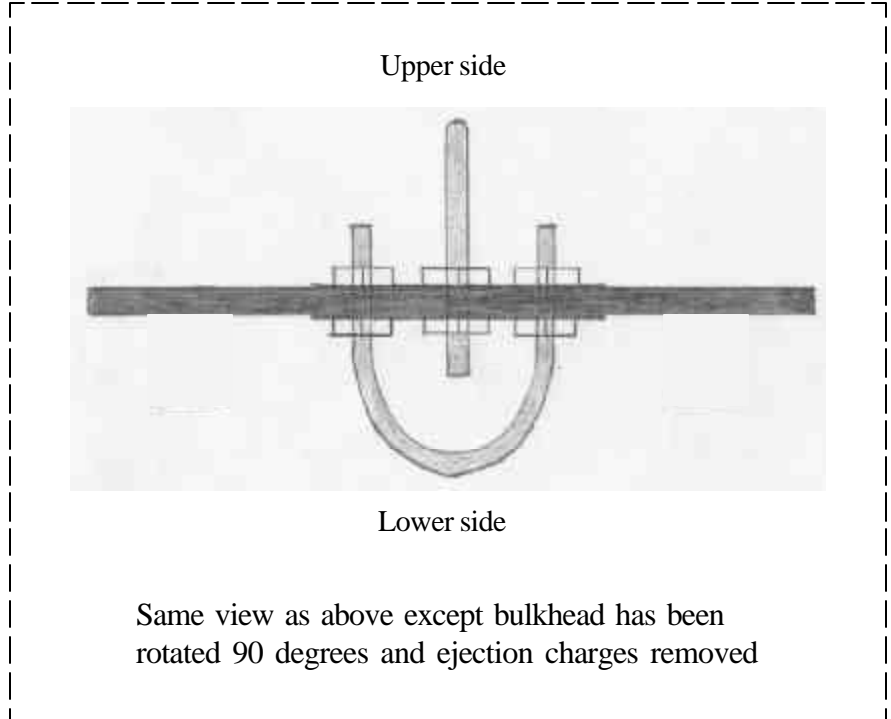
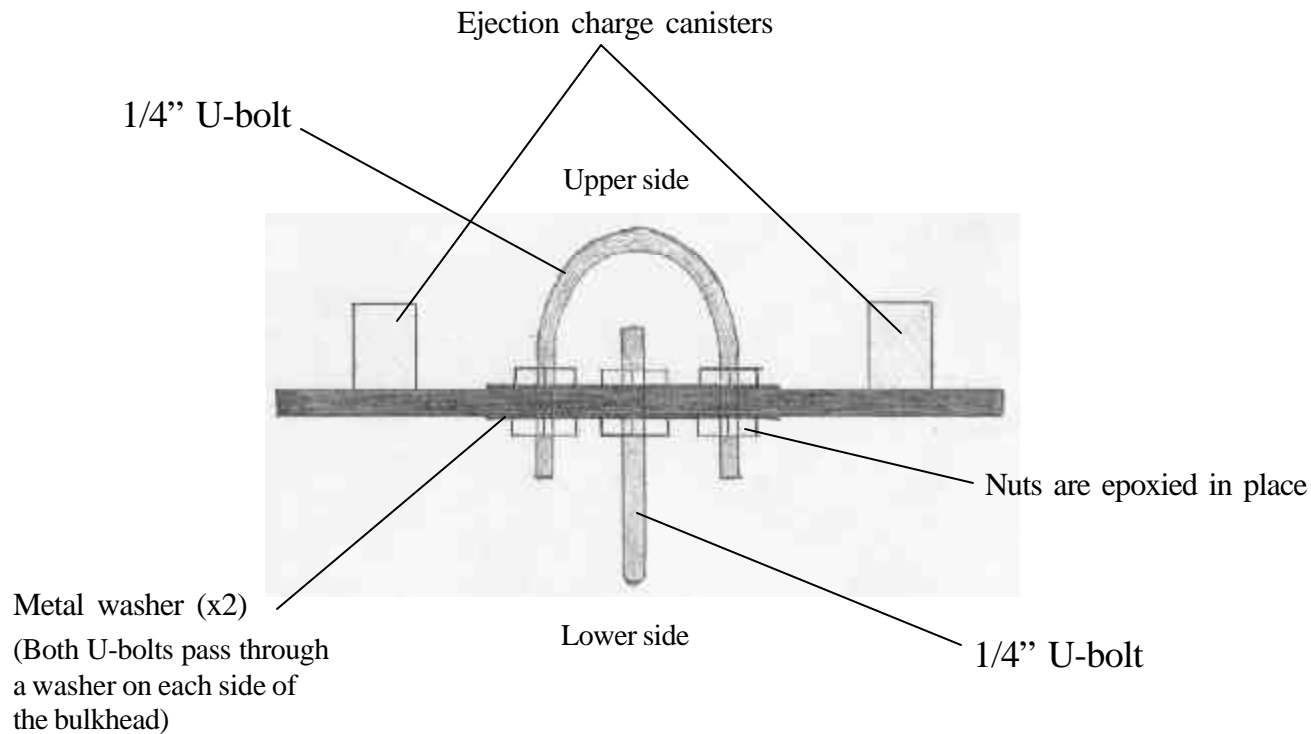


Nosecone coupler is slip-fit to allow for parachute ejection

Standard 7.5" Fiberglass Nosecone

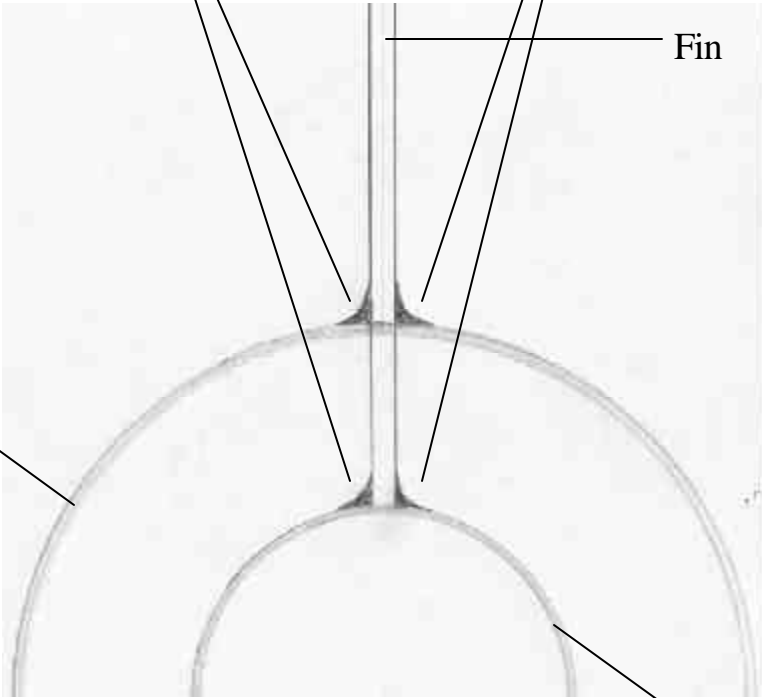


Nosecone Bulkhead



Airframe Bulkhead

Epoxy fillets reinforced with fiberglass run entire root cord of fin

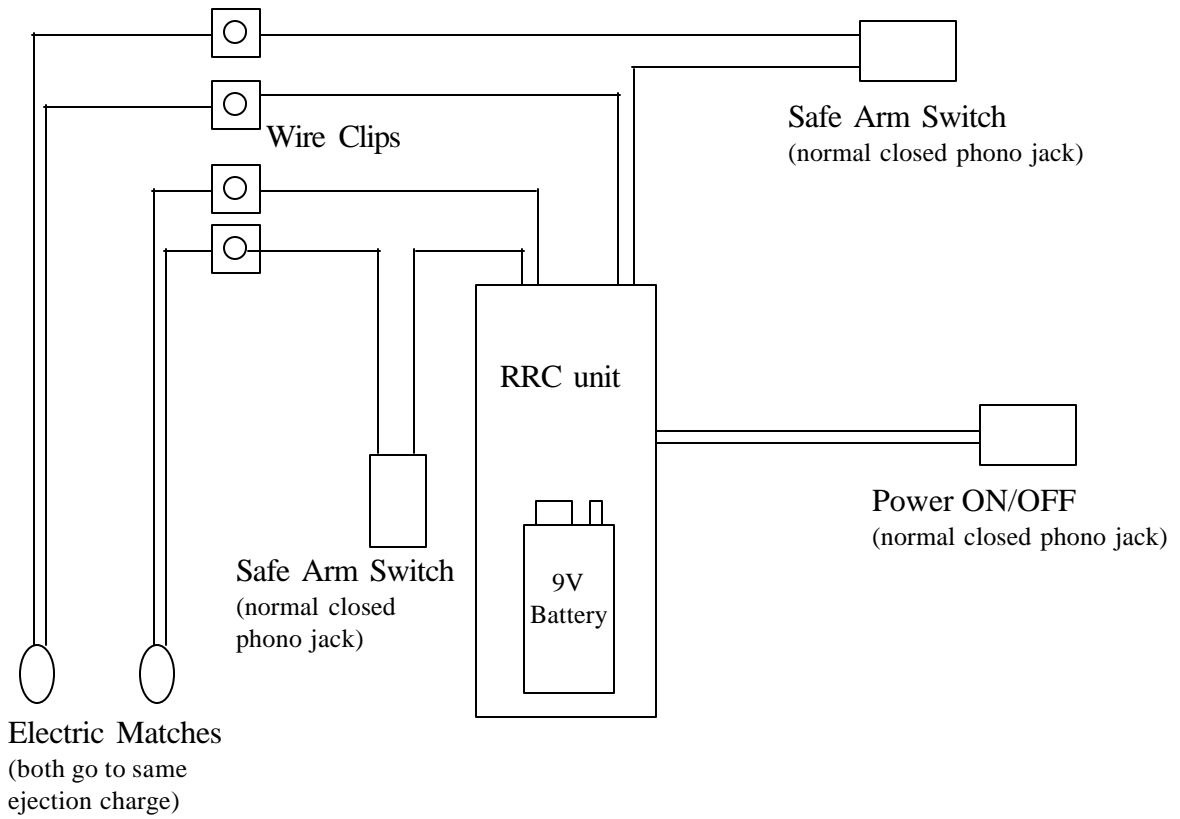


Airframe Tube

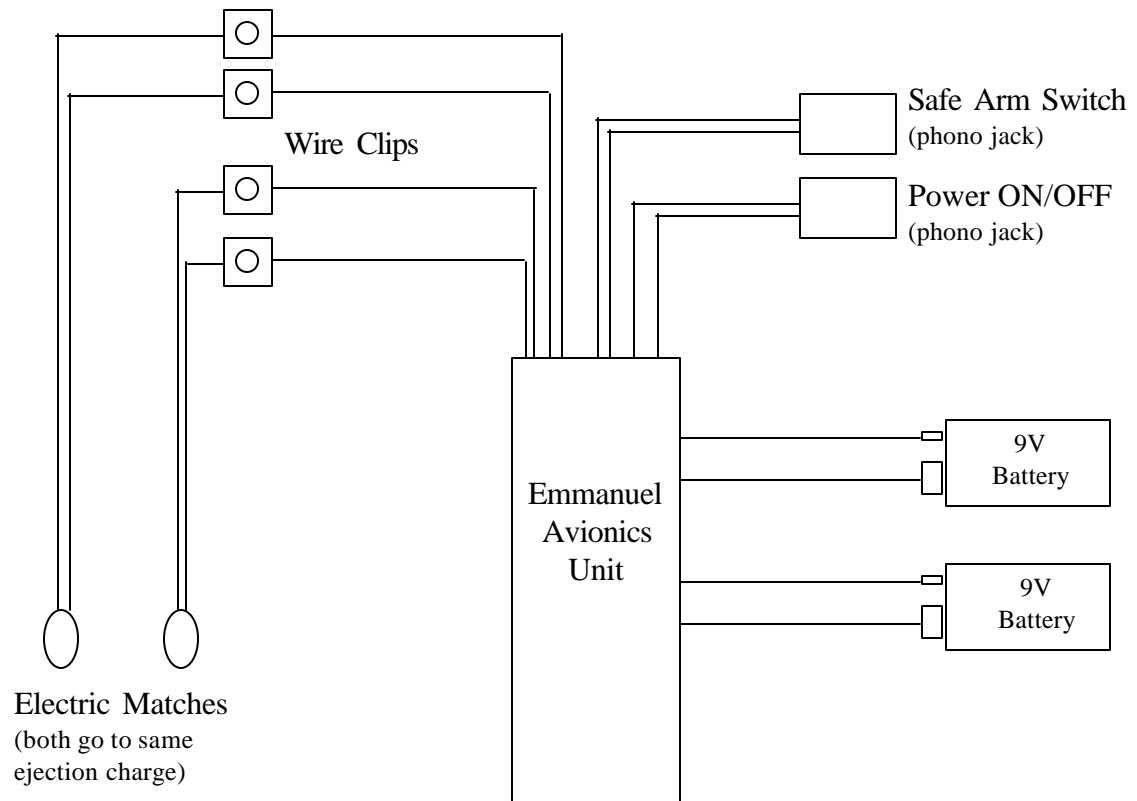
Fin

Motor Tube

Fin Joints



Wiring Diagram for Missile Works RRC Unit



Wiring Diagram for Emmanuel Avionics Unit