



STANFORD  
UNIVERSITY



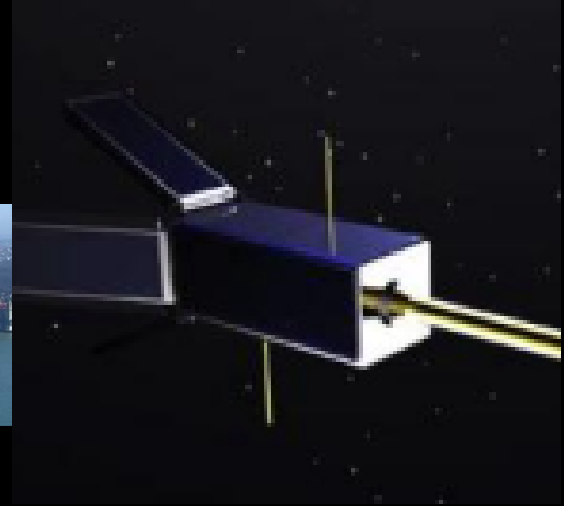
# BioLaunch



## SSDL Astrobiology Initiative

High-Altitude Balloons and PicoSatellites

Low-Cost Technologies Bridging the Gap for Scientific Research



# SSDL

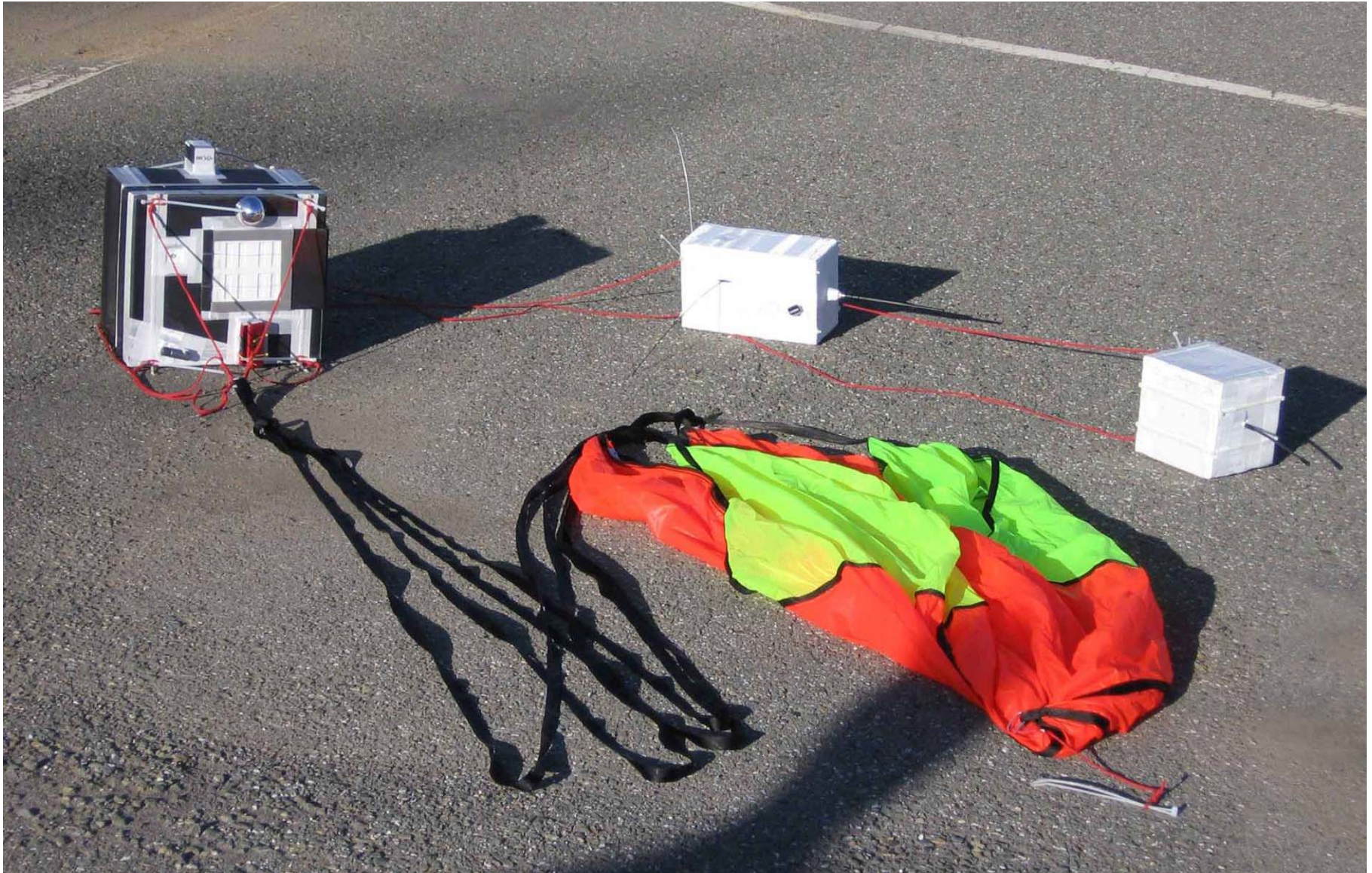
Space and Systems  
Development Laboratory





# Flight Hardware and Experiments

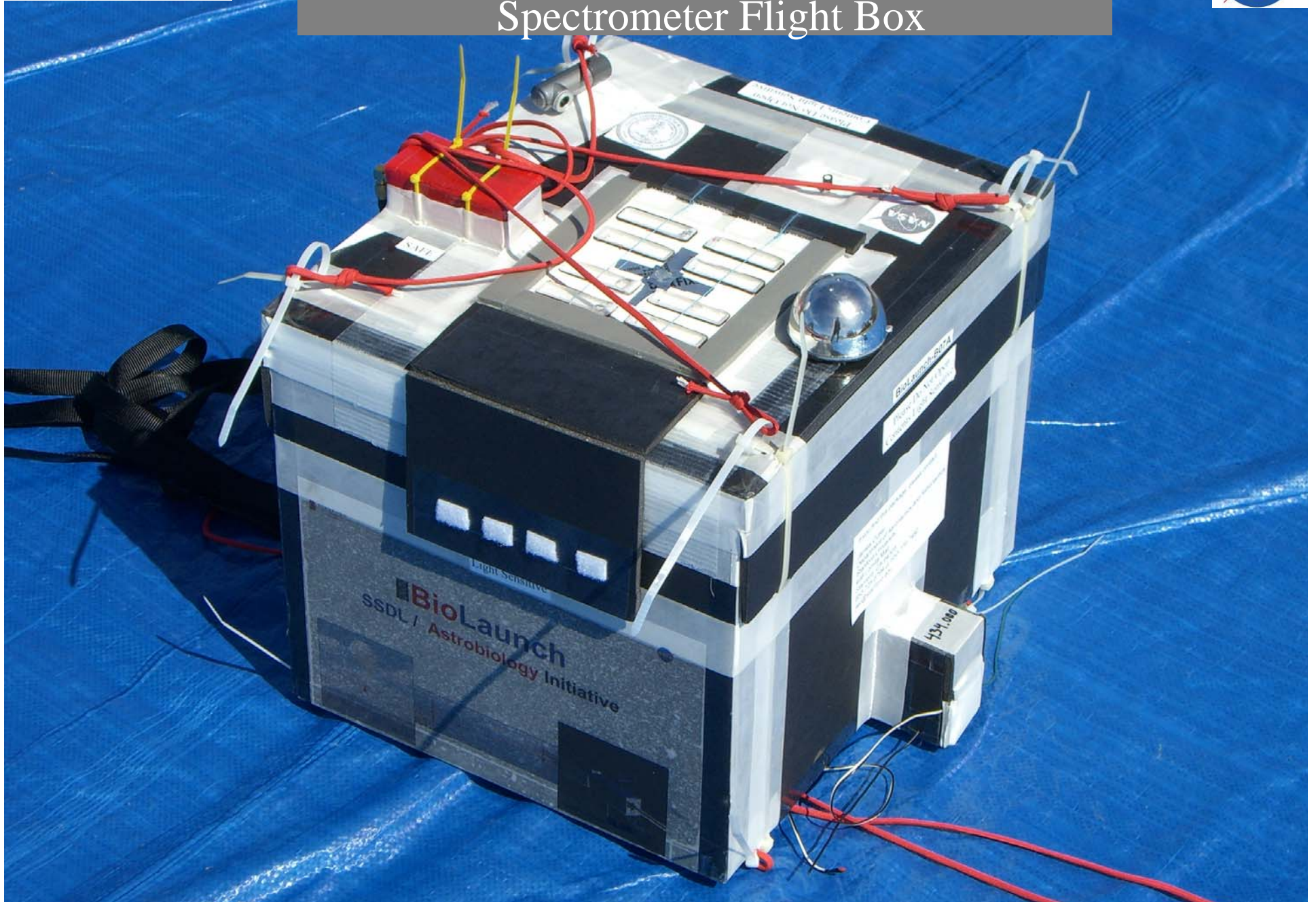
Spectrometer Flight Box, KATYSat, APRS/GPS Beacon





# Flight Hardware and Experiments

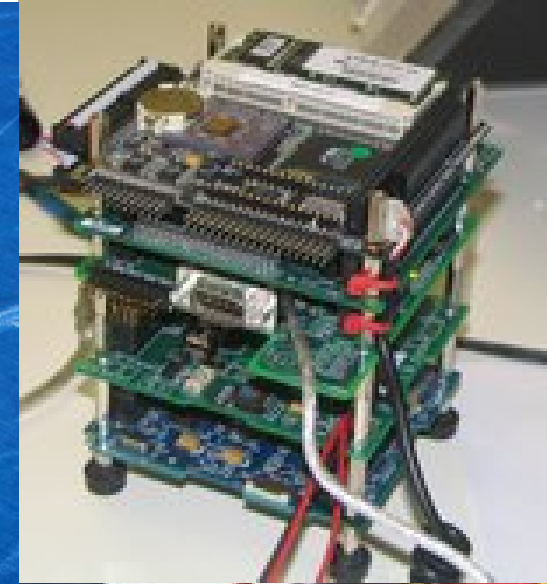
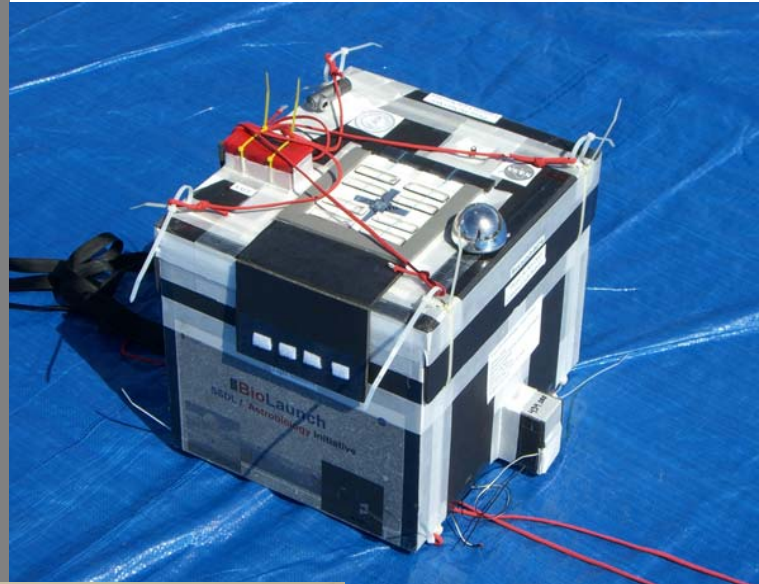
## Spectrometer Flight Box



# Flight Hardware and Experiments

## Spectrometer Flight Box

Spectral Radiometer  
Radiation Exposed  
Cuvettes  
AstroChemistry  
Experiment  
PC104 Computer  
WebCam  
GPS and Radio Beacons





# Flight Hardware and Experiments



KatySat (use AA236 Slides ???)

Satellite flight test

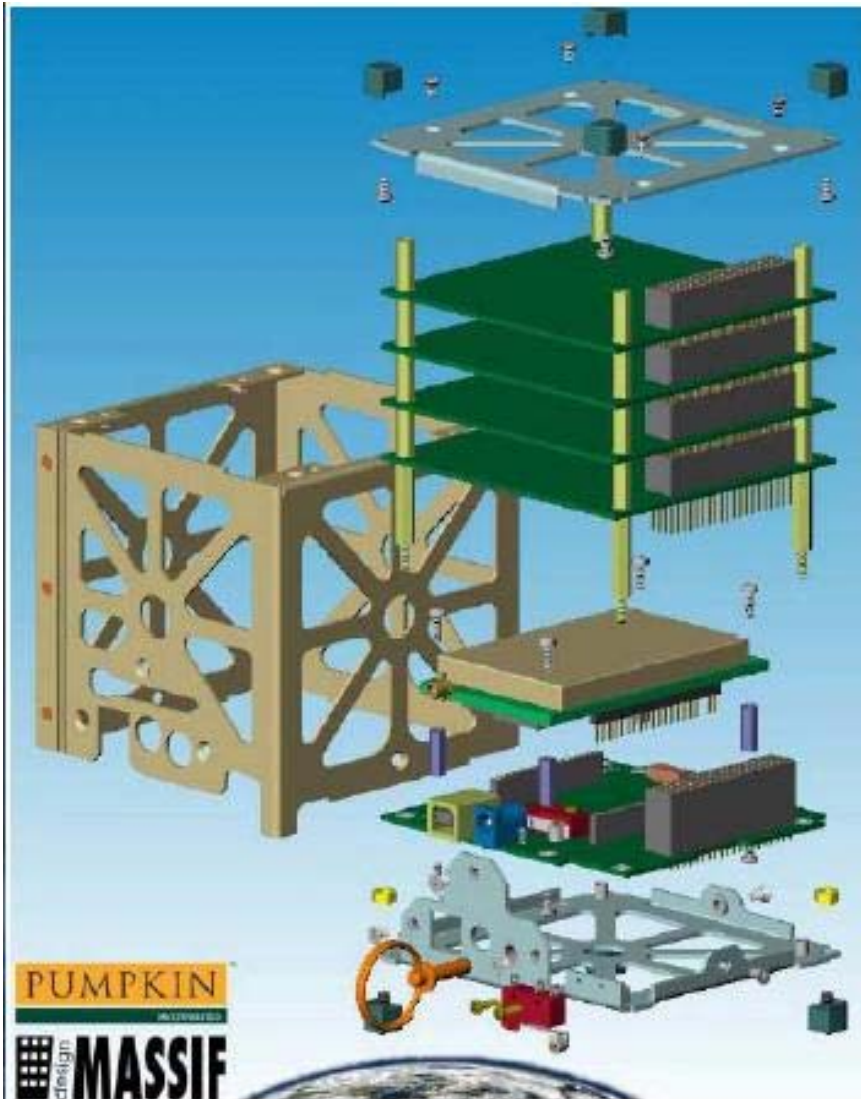
Imagery, comm's, sensors

APRS/GPS Beacon (use AA236 Slides ???)

Real-time position reporting  
for tracking and recovery

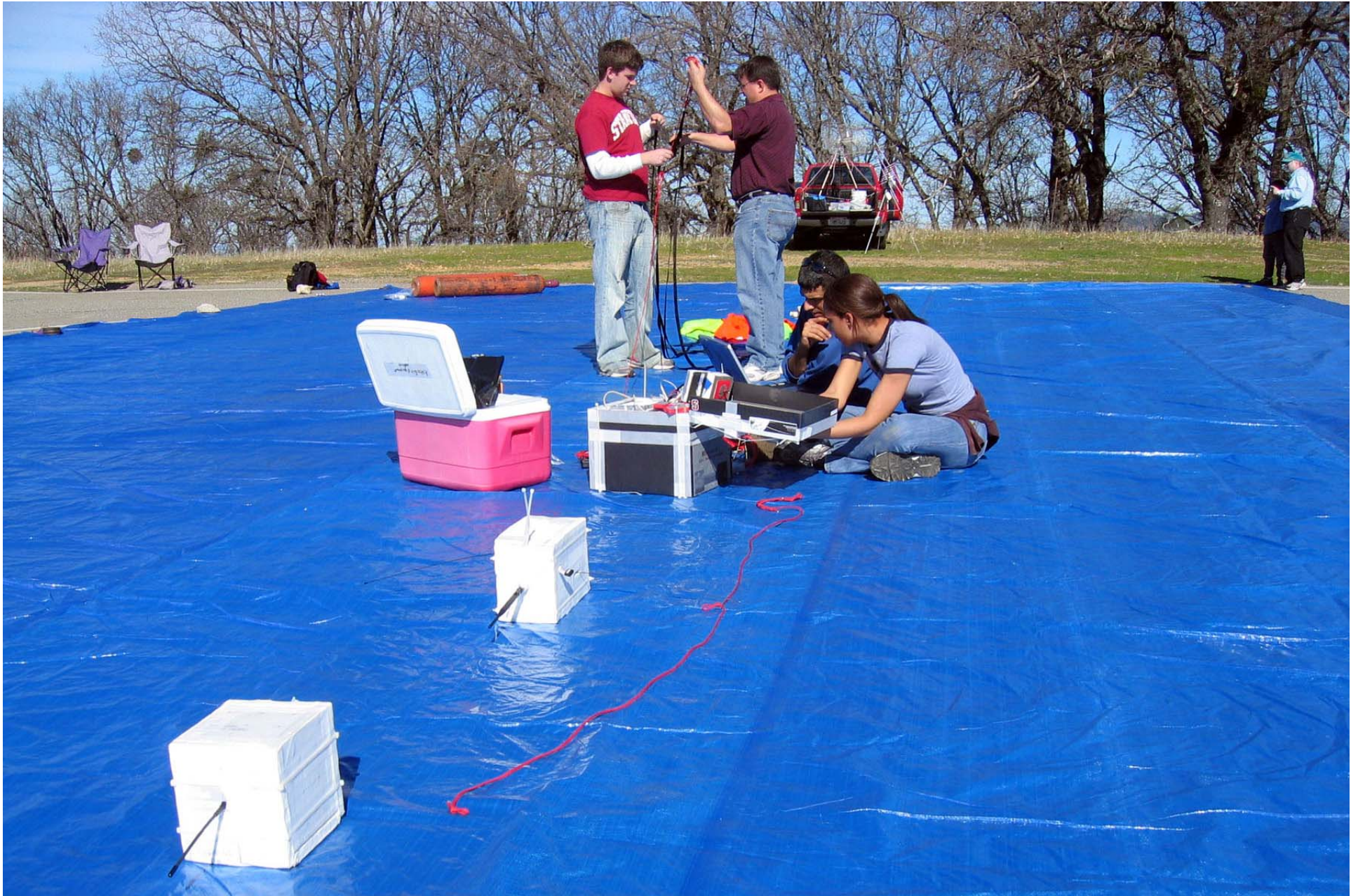
Flight Termination Unit

User specified release from balloon





# Flight Operations



# Flight Operations



Picture of balloon release here





STANFORD  
UNIVERSITY

# Flight Operations







STANFORD  
UNIVERSITY

# Flight Operations







STANFORD  
UNIVERSITY

# Flight Operations







STANFORD  
UNIVERSITY

# Flight Operations

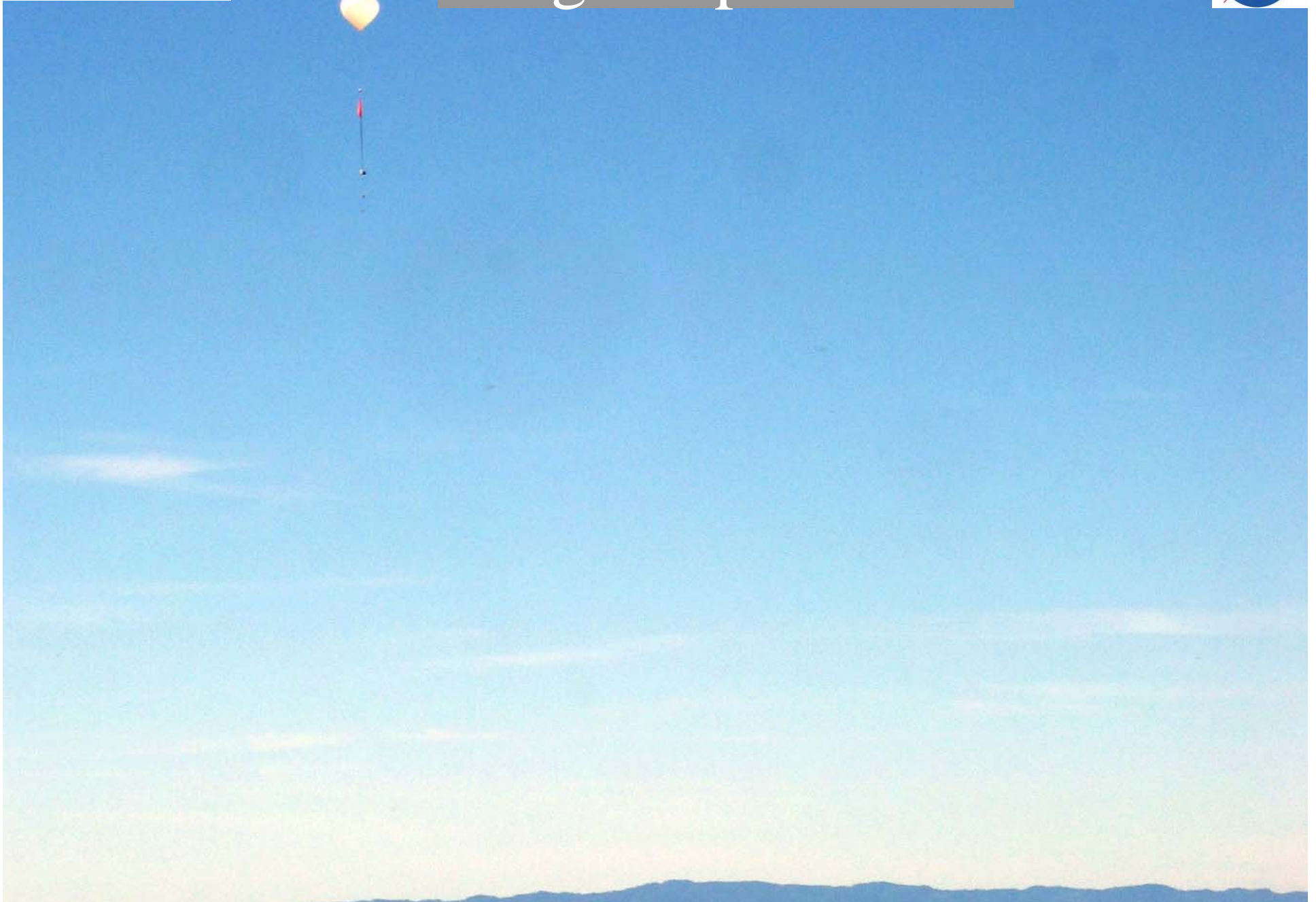






STANFORD  
UNIVERSITY

# Flight Operations

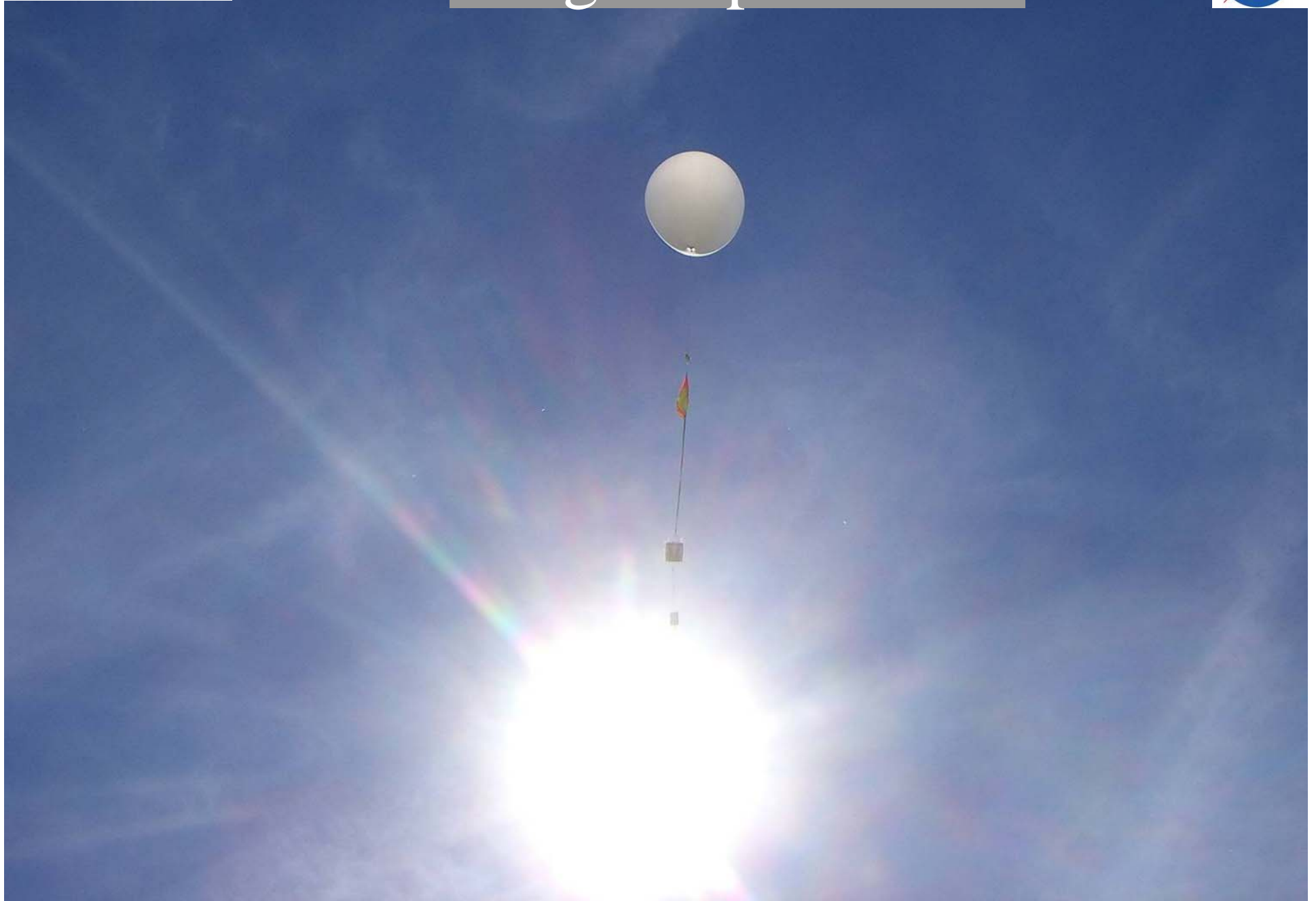






STANFORD  
UNIVERSITY

# Flight Operations

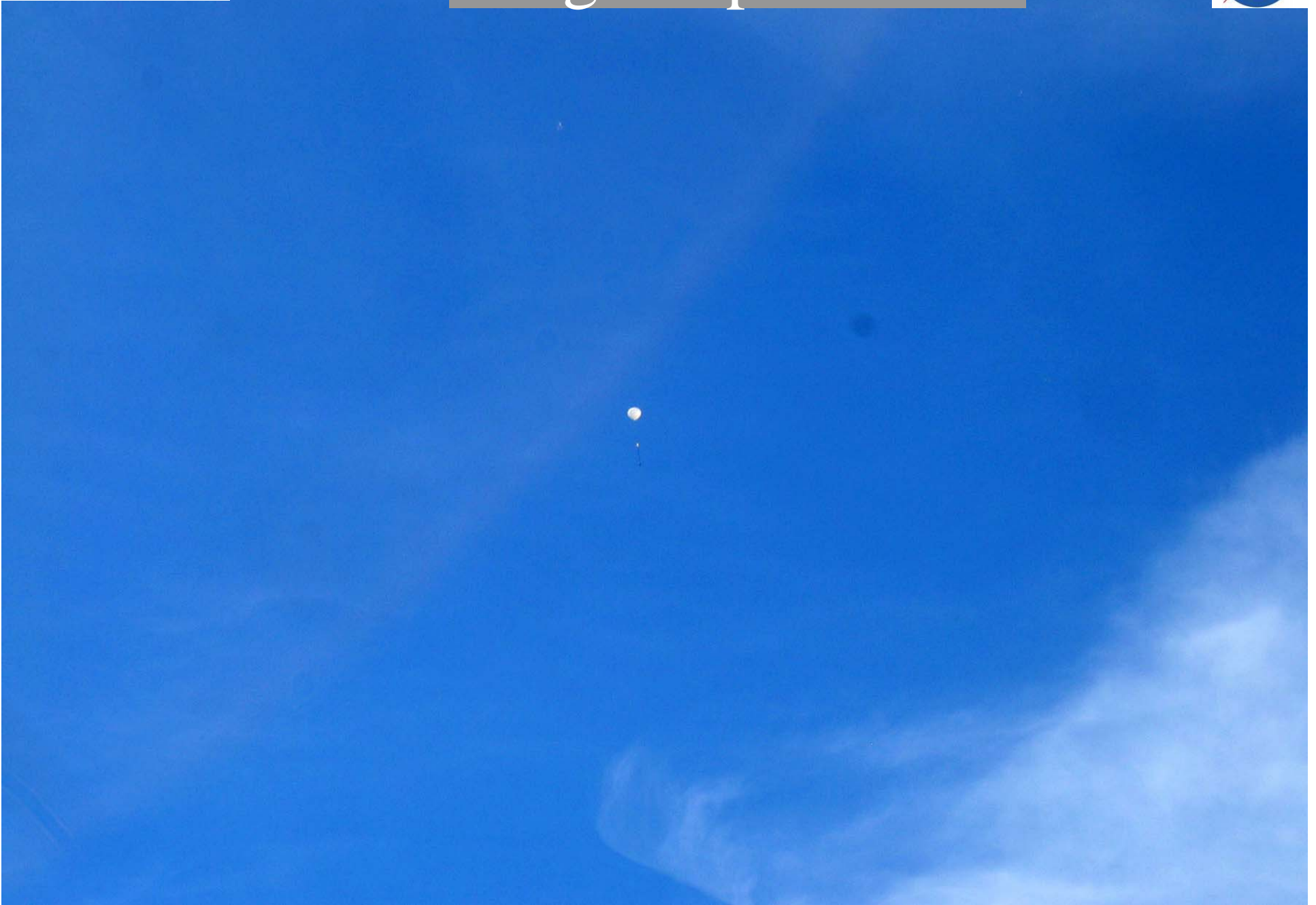






STANFORD  
UNIVERSITY

# Flight Operations







STANFORD  
UNIVERSITY

# View from Flight







STANFORD  
UNIVERSITY

# View from Flight



Pete's Golf Course







STANFORD  
UNIVERSITY

# View from Flight







STANFORD  
UNIVERSITY

# View from Flight





STANFORD  
UNIVERSITY

# View from Flight







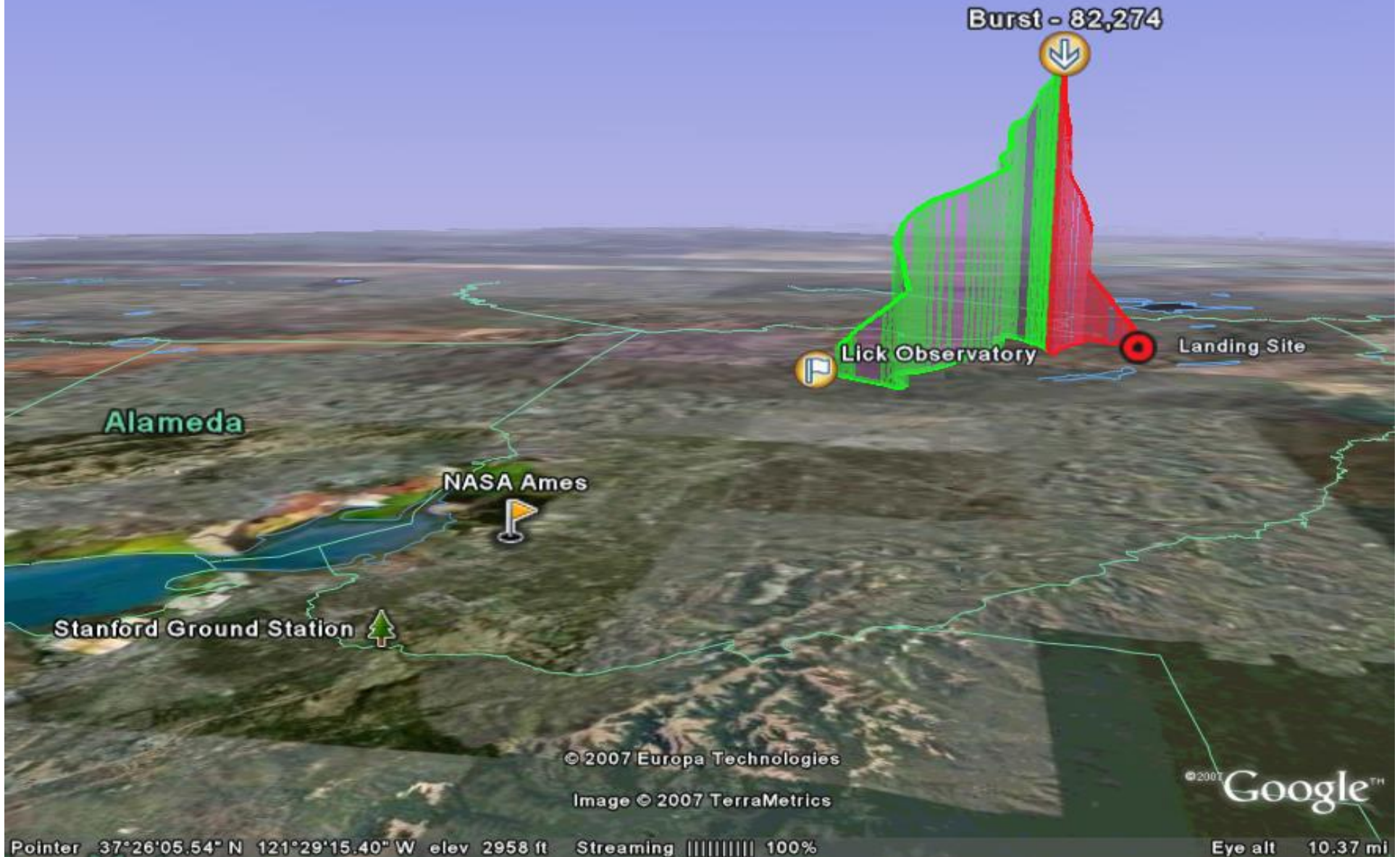
STANFORD  
UNIVERSITY

# Ground Station



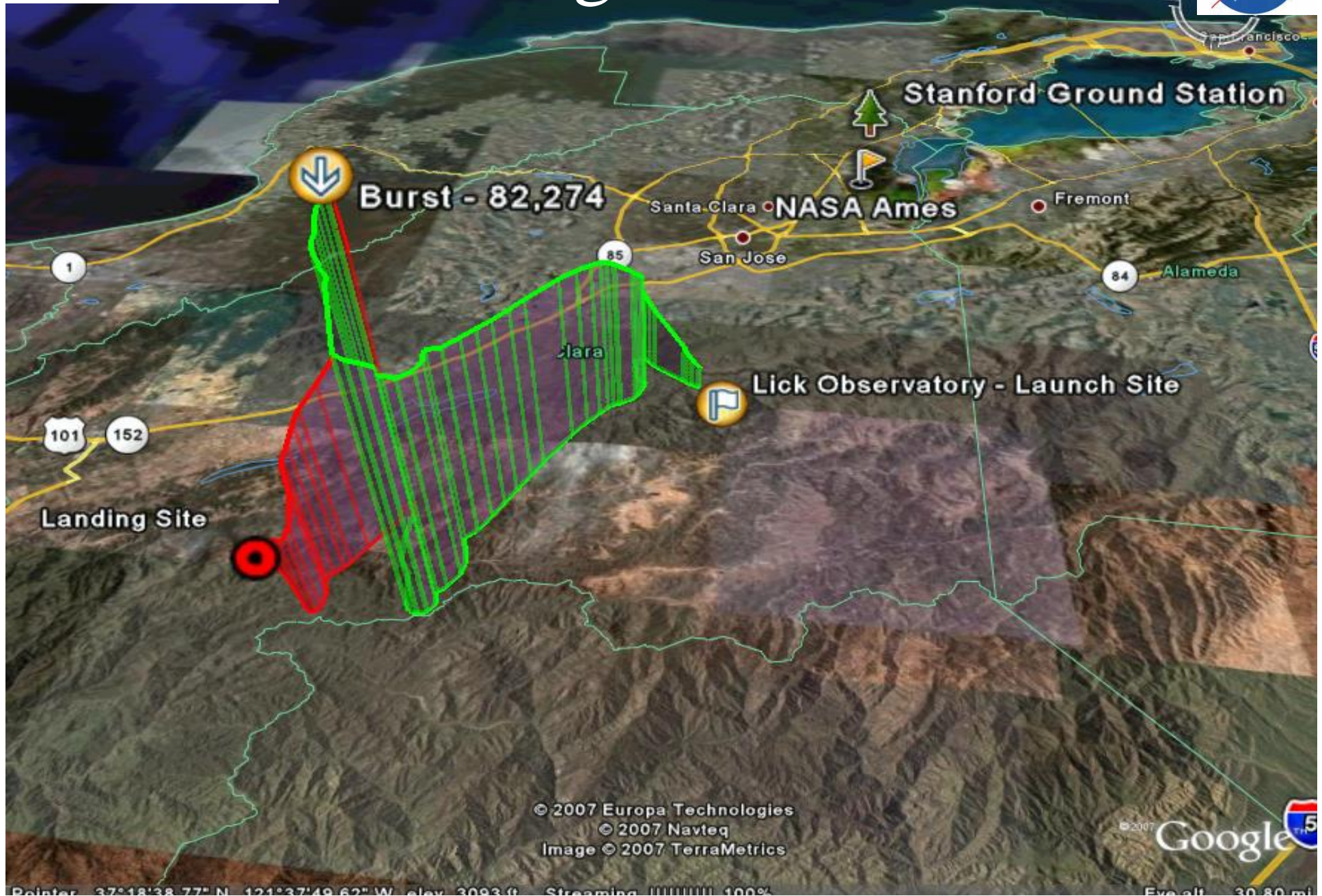


# Flight Profile





# Flight Profile



© 2007 Europa Technologies  
© 2007 Navteq  
Image © 2007 TerraMetrics

© 2007 Google 





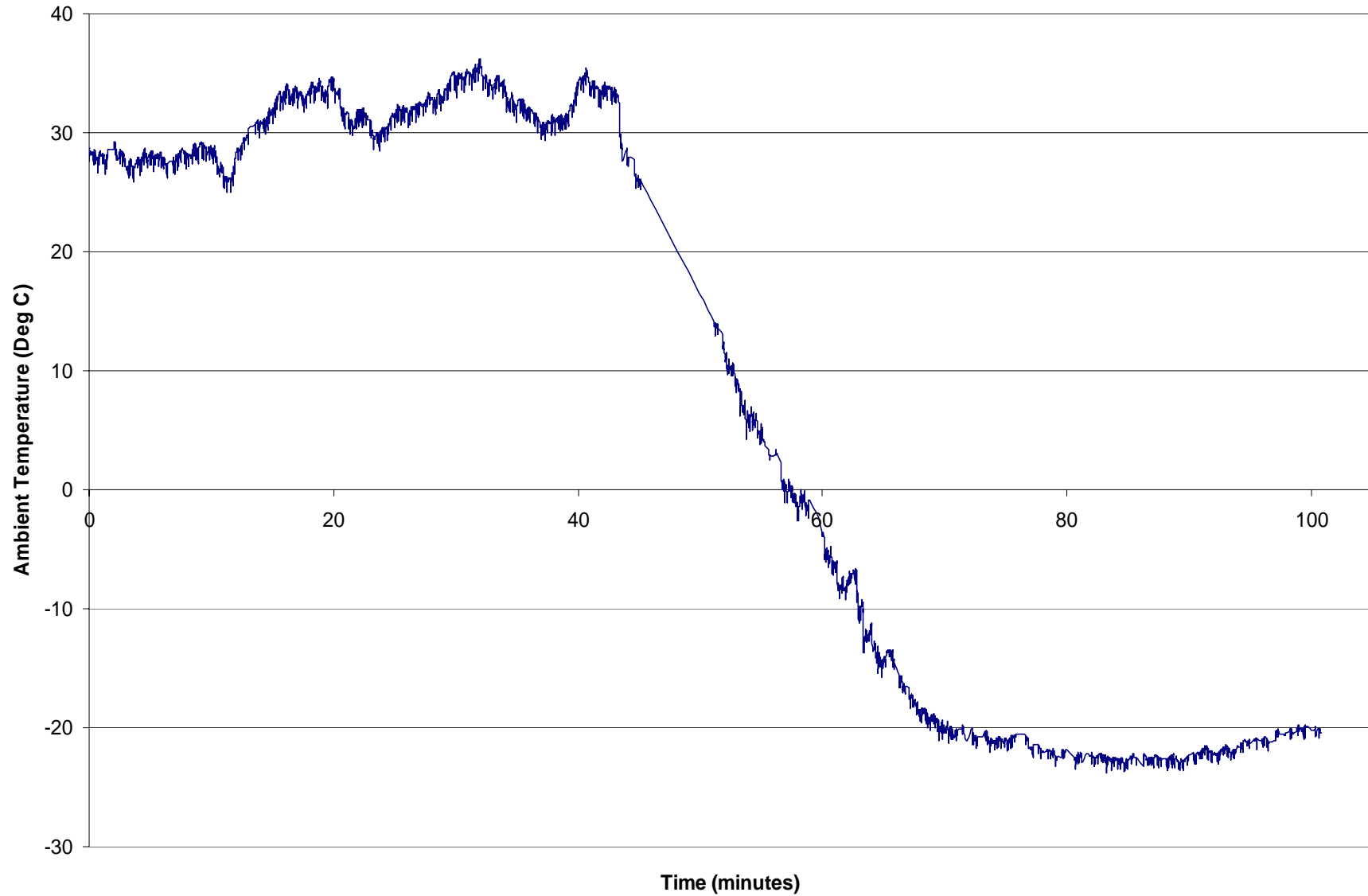
STANFORD  
UNIVERSITY

# End of the Flight

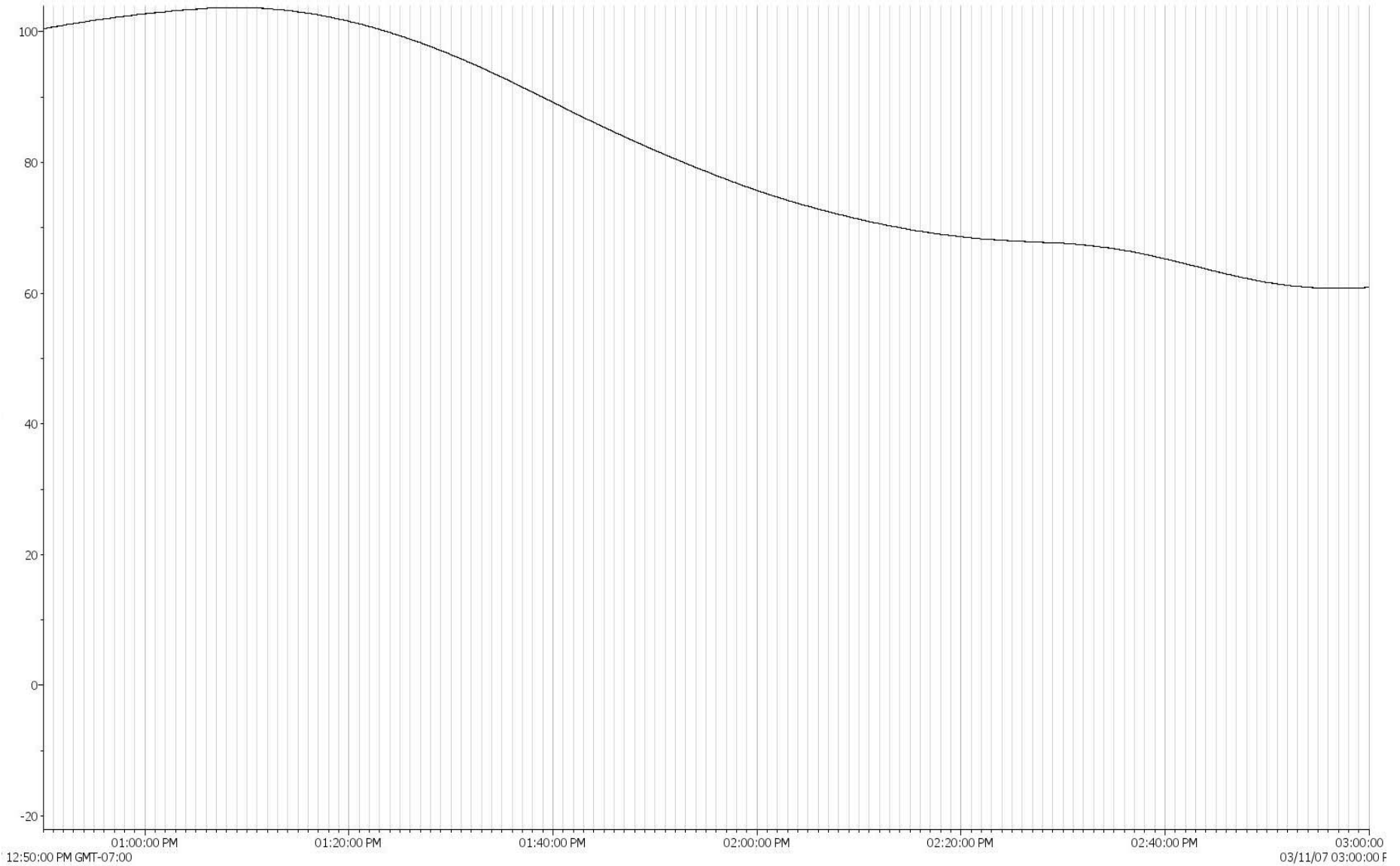




# External Temperature



# Internal Spectrometer Temperature





# Spectrometer Data During Flight

